

SMC REFERENCES (Overseas)



SMC's years of specialized experience in Automated Storage/
Retrieval System & Material Handling System

2013 Year

*Prepared by
SHIN-HEUNG MACHINE CO., LTD.*

MAIN REFERENCE SITE

REFERENCE

Customer	Thai Petrochemical Industry Public Co., Ltd./ Tahiland
Contract Year	1994
Rack Type	Rack Supported Building
Product	Petrochemical (PE,PP)
Locations	50,208 Cells
Main Equipment	STC:12 Sets, CNV: 250 sets RGV:9 Sets



SHIN-HEUNG MACHINE CO.,LTD

MAIN REFERENCE SITE

REFERENCE

Customer	PT Ultra Jaya Milk Industry / Indonesia
Contract Year	1996
Rack Type	Free Standing Rack
Product	Dairy Product
Locations	12,160 Cells
Main Equipment	STC:8 Sets, CNV: 120 sets AGV:8 Sets



SHIN-HEUNG MACHINE CO.,LTD

MAIN REFERENCE SITE

REFERENCE

Customer	Freight Links Express DC / Singapore
Contract Year	1997
Rack Type	Free Standing Rack
Product	Distribution
Locations	15,390 Cells
Main Equipment	STC:7 Sets, CNV: 125 sets AGV:7 Sets



SHIN-HEUNG MACHINE CO.,LTD

MAIN REFERENCE SITE

REFERENCE

Customer	SAPCO / Iran
Contract Year	1998
Rack Type	Rack Supported Building
Product	Automotive
Locations	21,930 Cells
Main Equipment	STC:6 Sets, CNV: 128 sets RGV:4 Sets

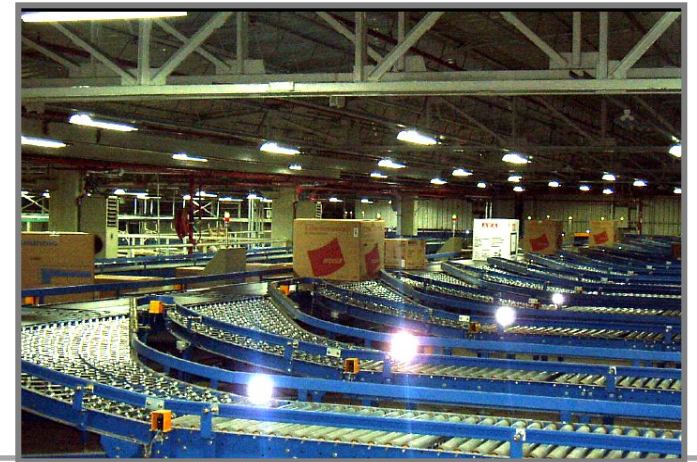


SHIN-HEUNG MACHINE CO.,LTD

MAIN REFERENCE SITE

REFERENCE

Customer	BEKO / Turkey
Contract Year	2003
Rack Type	Rack Supported Building
Product	TV
Locations	19,700Cells
Main Equipment	STC:11 Sets, CNV: 449 sets

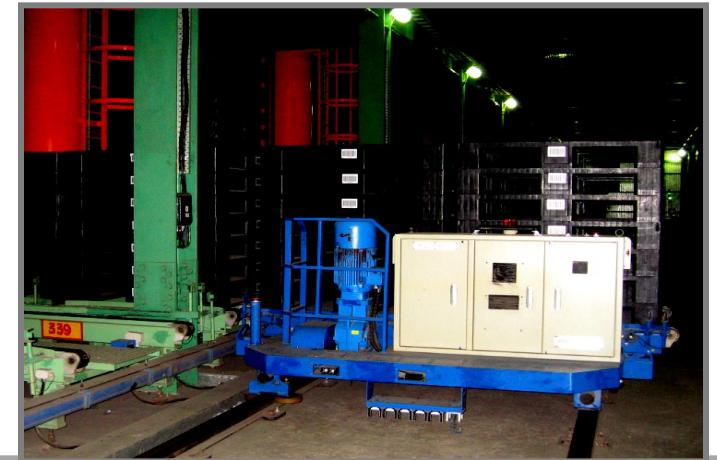


SHIN-HEUNG MACHINE CO.,LTD

MAIN REFERENCE SITE

REFERENCE

Customer	Reliance / India
Contract Year	2004
Rack Type	Rack Supported Building
Product	Polyester Yarn
Locations	30,400 Cells
Main Equipment	STC:10 Sets, CNV: 358 sets RGV:2 Sets



SHIN-HEUNG MACHINE CO.,LTD

MAIN REFERENCE SITE

REFERENCE

Customer	Arcelik / Turkey
Contract Year	2005
Rack Type	Free Standing Rack
Product	Tub & material
Locations	9,072Cells
Main Equipment	STC:9 Sets, CNV: 388 sets RGV:14 Sets



SHIN-HEUNG MACHINE CO.,LTD

MAIN REFERENCE SITE

REFERENCE

Customer	IKEA (Shanghai DC2) / China
Contract Year	2006
Rack Type	Free Standing Rack
Product	Furniture
Locations	77,474Cells
Main Equipment	STC:12 Sets, CNV: 260 sets RGV:2 Sets



SHIN-HEUNG MACHINE CO.,LTD

MAIN REFERENCE SITE

REFERENCE

Customer	IKEA (Shanghai FXB1) / China
Contract Year	2007
Rack Type	Free Standing Rack
Product	Furniture
Locations	99,848 Cells
Main Equipment	STC:14 Sets, CNV: 288 sets RGV:2 Sets

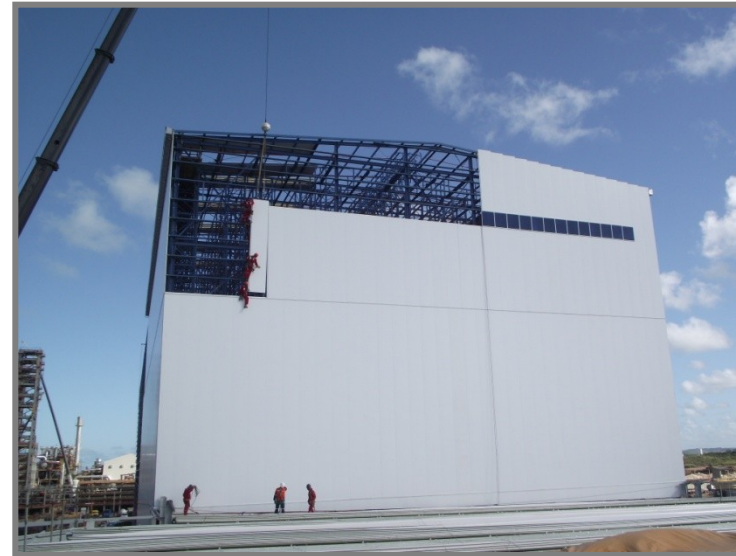


SHIN-HEUNG MACHINE CO.,LTD

MAIN REFERENCE SITE

REFERENCE

Customer	PQS / Brazil
Contract Year	2010 (Under construction)
Rack Type	Rack Supported Building
Product	Petrochemical
Locations	26,488 Cells
Main Equipment	STC:7 Sets, CNV: 248 sets RGV:1 Sets



SHIN-HEUNG MACHINE CO.,LTD

MAIN REFERENCE SITE

REFERENCE

Customer	Godfrey Philips India Limited / India
Contract Year	2010
Rack Type	Free Standing Rack
Product	Tobacco
Locations	5,160 Cells
Main Equipment	STC:2 Sets, CNV: 13 sets

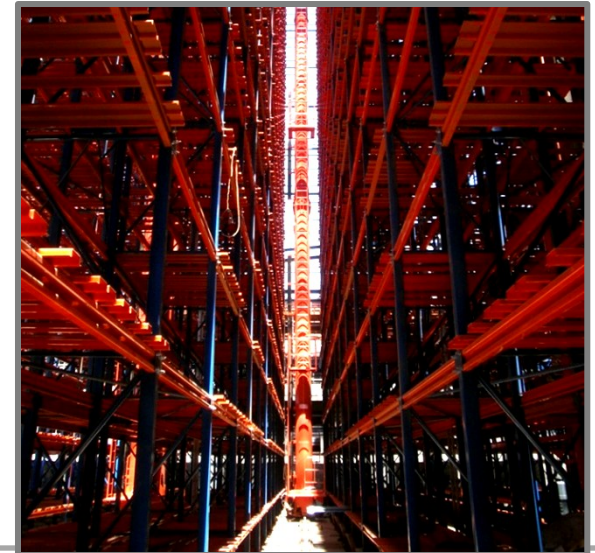


SHIN-HEUNG MACHINE CO.,LTD

MAIN REFERENCE SITE

REFERENCE

Customer	Reliance / (Silvassa) India
Contract Year	2010 (Under construction)
Rack Type	Rack Supported Building
Product	Petrochemical (POY/FDY/ PTY)
Locations	27,048 Cells
Main Equipment	STC:7 sets, RGV: 3 sets

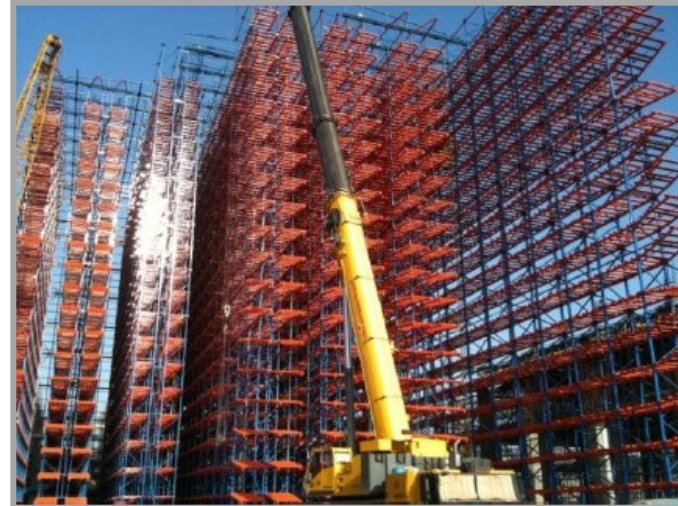


SHIN-HEUNG MACHINE CO.,LTD

MAIN REFERENCE SITE

REFERENCE

Customer	Reliance / (SBR) India
Contract Year	2012 (Under construction)
Rack Type	Rack Supported Building
Product	Petrochemical (SBR/PBR)
Locations	10,992 Cells
Main Equipment	STC:6 sets, RGV: 2 sets, Conveyor 1 lot



SHIN-HEUNG MACHINE CO.,LTD

MAIN REFERENCE SITE

REFERENCE

Customer	Reliance / (PET 3) India
Contract Year	2012 (Under construction)
Rack Type	Rack Supported Building
Product	Petrochemical (PET)
Locations	14,400 Cells
Main Equipment	STC:6 sets, RGV: 3 sets, Conveyor 264 sets



SHIN-HEUNG MACHINE CO.,LTD

MAIN REFERENCE SITE

REFERENCE

Customer	Hyundai Motors/ India
Contract Year	2012 (Under construction)
Rack Type	Free Standing Rack
Product	Diesel Engine
Locations	1,716 Cells
Main Equipment	STC:4 sets, RGV: 2 sets, Conveyor 64 sets



SHIN-HEUNG MACHINE CO.,LTD

MAIN REFERENCE SITE

REFERENCE

Customer	S.K. Food / Thailand
Contract Year	2012 (Under construction)
Rack Type	Free Standing Rack
Product	Food
Locations	5,920 Cells
Main Equipment	STC:2 sets, Conveyor 21 sets

SHIN-HEUNG MACHINE CO.,LTD

THANK YOU

*SOME MAIN REFERENCES WERE EXCLUDED DUE TO THE
NONDISCLOSURE CONTRACT TERM OR BEING UNDER THE STAGE
OF BEGINNING CONSTRUCTION .*

SHIN-HEUNG MACHINE CO.,LTD